

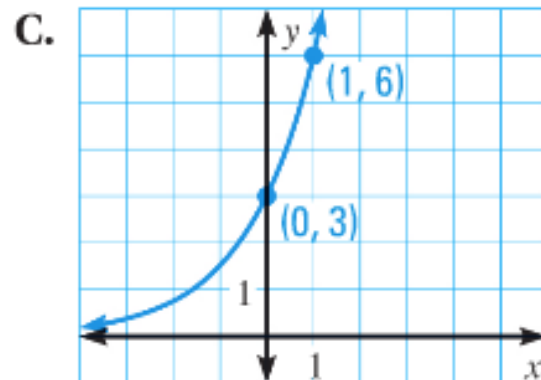
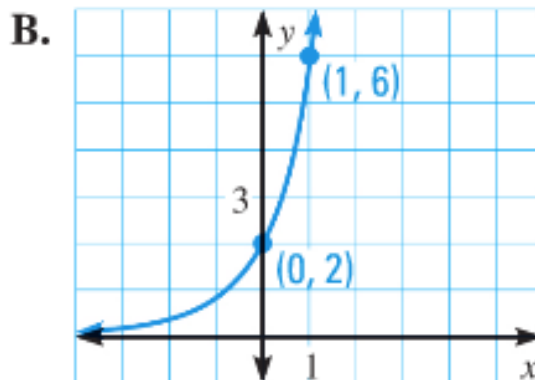
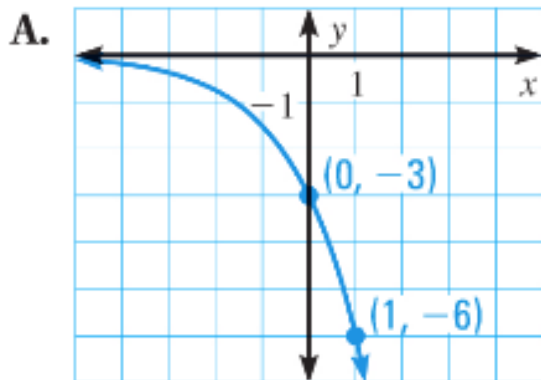
Homework p. 482: 3, 4, 5, 7, 15, 17

MATCHING GRAPHS Match the function with its graph.

3. $y = 3 \cdot 2^x$

4. $y = -3 \cdot 2^x$

5. $y = 2 \cdot 3^x$



GRAPHING FUNCTIONS Graph the function.

7. $y = -2^x$

TRANSLATING GRAPHS Graph the function. State the domain and range.

15. $y = -3 \cdot 2^{x+2}$

(17.) $y = 2^{x+1} + 3$