

# Homework

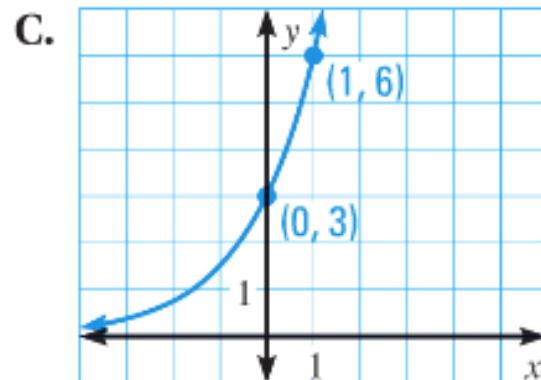
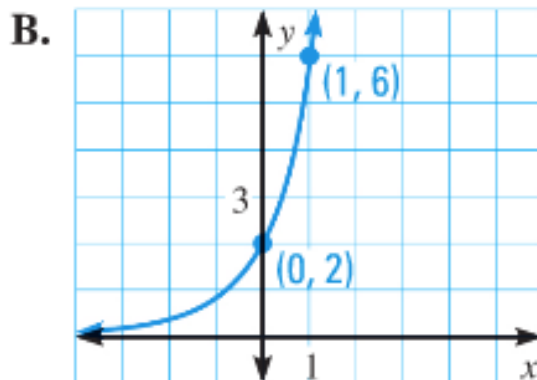
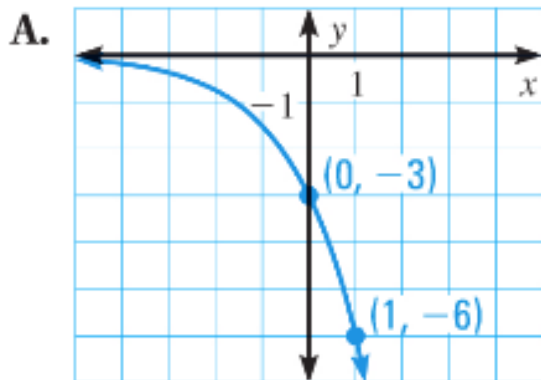
p. 482: 3, 4, 5, 7, 15, 17

**MATCHING GRAPHS** Match the function with its graph.

3.  $y = 3 \cdot 2^x$

4.  $y = -3 \cdot 2^x$

5.  $y = 2 \cdot 3^x$



**GRAPHING FUNCTIONS** Graph the function.

7.  $y = -2^x$

**TRANSLATING GRAPHS** Graph the function. State the domain and range.

15.  $y = -3 \cdot 2^{x+2}$

(17.)  $y = 2^{x+1} + 3$

**\*\*Find the asymptote as well**