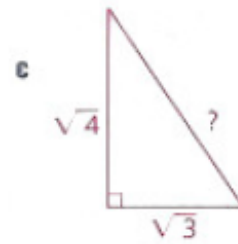
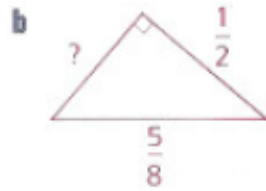
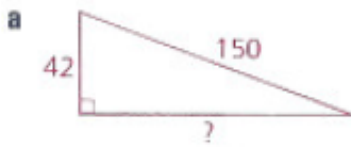


Similarity and Trigonometric Ratios Review

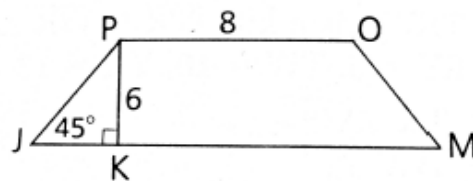
****Make sure you look over your quizzes and your other reviews as well****

1) Find the missing side of each triangle.

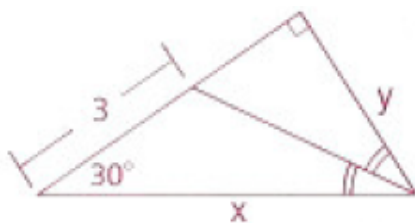


2) A submarine travels an evasive course, trying to outrun a destroyer. It travels 1 km north, then 1 km west, then 1 km north, then 1 km west, and so forth, until it has traveled a total of 41 km. How many kilometers is the sub from the point at which it started?

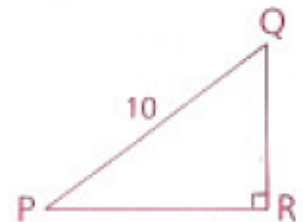
- 3) Given: \overline{PK} is an altitude of isosceles trapezoid JMOP.
 $PK = 6$, $PO = 8$, $\angle J = 45^\circ$
 Find: The perimeter of JMOP



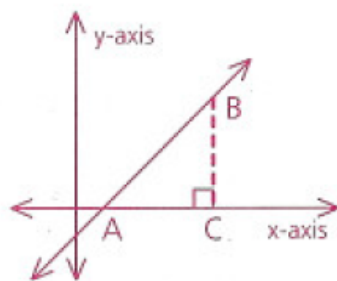
4) Find x and y .



- 5) Given: $\sin \angle P = \frac{3}{5}$, $PQ = 10$
 Find: $\cos \angle P$



- 6) If the slope of \overleftrightarrow{AB} is $\frac{5}{8}$, find the tangent of $\angle BAC$.



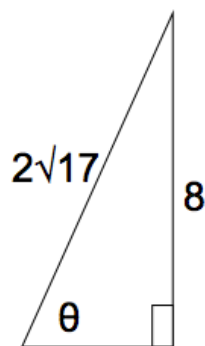
- 7) Find, to the nearest degree, the angles of a (3, 4, 5) triangle.

- 8) Evaluate the trigonometry values for angle θ .

$$\sin \theta =$$

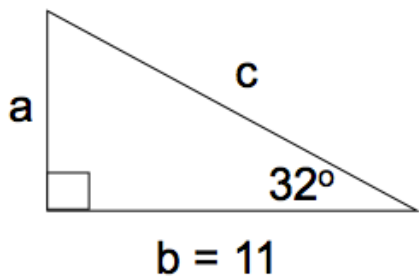
$$\cos \theta =$$

$$\tan \theta =$$



- 9) Find all angles and sides of the following triangles:

a)



b)

